



June is the sixth month of the year in the Julian and Gregorian calendars, the second of four months to have a length of 30 days. June contains the summer solstice in the northern hemisphere, the day with the most daylight hours, and the winter solstice in the southern hemisphere, the day with the fewest daylight hours (excluding polar regions in both cases). June in the northern hemisphere is the seasonal equivalent to December in the southern hemisphere and vice versa. In the northern hemisphere, the beginning of the traditional astronomical summer is 21 June (meteorological summer begins on 1 June). In the southern hemisphere, meteorological winter begins on 1 June.

At the start of June, the sun rises in the constellation of Taurus; at the end of June, the sun rises in the constellation of Gemini. However, due to the precession of the equinoxes, June begins with the sun in the astrological sign of Gemini, and ends with the sun in the astrological sign of Cancer.

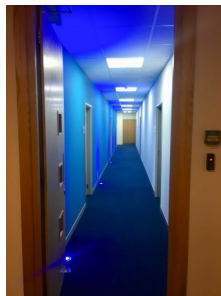


Little touch ups...

We have been very busy around the centre these past few weeks. Have you noticed we spruced the centre up by touching up the paint work? We at Regal Court take pride in our business centre and like to ensure it looks good as new.

New offices ready now!

As you may be aware, we have had some renovation work on the 3rd floor. We have transformed a very large open plan office into 6 smaller ones that will fit 8-10 workstations. Why not ask to have a sneak peek and see if you would like to upgrade!?



Why not follow us on social media!

@regalcourtbusinesscentre

@regal_court

Regal Court Business Centre

Meet the Team

Fiona Bryan
Business Centre Manager

Hayley Phelan
Customer Service Representative

Sian Warner
Customer Service Representative

David Taylor
Estates Manager

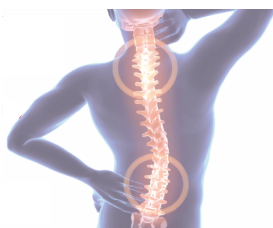
Bob Sampson
Head of IT

Patryk Kozanowski
IT Technician

Mai Badawy
IT Technician

Health & Wellbeing Day!

On Wednesday 27th June Halsa Chiropractic & Physiotherapy will be giving a health talk & posture checks at Regal Court! It will start at 9.30am and checks will commence at 10am up until 1.15pm. Contact reception if you would like to take part, as spaces are limited.



Lucky dip available now!

Will you choose the winning team!?



FIFA WORLD CUP
RUSSIA 2018

With this upcoming event we will be raising money for 'Street Child United' who will be holding their own world cup with street children from all over the world! Leading up to this event and the duration of the world cup, we will be holding different fundraising events at Regal Court. So keep an eye out on your emails and posters around the Centre!

This year one of your clients David Scott will be challenging himself to ride the L'Étape Wales Dragon Ride, 140 miles through the incredible landscape of South Wales for Anthony Nolan Blood Cancer Research. The L'Étape Wales, is the equivalent of a stage of the Tour de France. Covering 3 major climbs, Rhigos, Bwlch and The Devil's Elbow, which equates to 3,616m or 11,683ft worth of climbing. Anthony Nolan carries out essential research into a cure for all Blood Cancers and with your help we can bring an end to Leukaemia and other Blood Cancers sooner. If you would like to support him and the good work of Anthony Nolan, please follow the link below, your donation will be greatly appreciated.



<https://uk.virginmoneygiving.com/DavidScott75>

Please can we raise an issue that has been occurring with wireless devices and the importance of understanding the correct policy here at Regal Court.

We've had a number of occasions where wireless devices, typically wireless printers, have been set to broadcast their own network rather than joining the building-wide provided wireless network. This causes issues where the printers broadcast on the same frequencies as our wireless and can lead to disruption of the network for other users (much like two radio stations using the same frequency, both suffer from interference). Therefore, we ask that all wireless enabled devices are either:

- Configured to use the building wireless rather than broadcast their own signal (often referred to as 'infrastructure mode' rather than use 'ad-hoc mode').
- Be connected to the cabled network and have their wireless function disabled.

Thank you in advance for your co-operation and if you have any questions please don't hesitate to ask Fiona or Bob Sampson our head of IT.



A little Health and Safety...

As you are aware we run the centre Monday to Friday 8am-6pm. Within these time we are here to cover all health and safety procedures including the fire alarm system.

However, out of these hours it is up to the individual client to fully understand the procedures in order if something is to happen they know what to do.

But please note in an emergency to ring the centre manager Fiona, on her out of hours mobile:

07715 682 343

What's happening in Slough!?

5k Race for Life

This is a 5k suitable for all abilities. This is thousands of women uniting with one purpose. Walk, jog or run. Raise valuable funds for research. THIS IS BEATING CANCER.

Saturday 2nd June, 11 o'clock at Royal Windsor Racecourse, Off Maidenhead Road, Windsor, SL4 5JJ.



Live Salsa Band Launch Night at The Fuzzy bear Windsor

Every 2nd Sunday in the month
Live Salsa Band and Latin DJ playing the latest Salsa, Bachata, Reggeton and more....
Doors open 7pm - Midnight
Salsa Classes for a levels at 7.30pm
Live Salsa Band on stage at 8.30pm
Dancing/Club until Midnight
Entry £10 all night.



Location: The Fuzzy Bear

2 Goswell Hill The Arches, Windsor, SL4 1RH

Blenheim Palace Flower Show- 2018

Discover over 300 exhibitors located around a Grand Floral Pavilion, which is situated on the South Lawn of the Oxfordshire World Heritage Site, the birthplace of Sir Winston Churchill. The pavilion itself will feature more than 30 floral displays and a large selection of flowers and plants from the UK's finest plantsmen. Visitors can expect to enjoy garden talks with experts and enthusiasts, fabulous food and drink as well as an outdoor plant village and live entertainment throughout the weekend.

Friday 22nd - Sunday 24th June.

Blenheim Palace, Woodstock, Oxfordshire,, Blenheim Palace, Oxford, OX20 1PP

