



Business Centre

FEBRUARY

February 2022

Welcome

Welcome to our new client Herschel Law Ltd who join us on ground floor office 001! After needing to source a new office solution in Slough, Herschel law view some potential office space and was able to move in the following week!



The perfect quick turn around they was looking for!

We hope they are settling in to their new office!

Also we are happy to congratulate our client Employment of London! After a successful 6 months in office 001 they have now grown to a larger space on the 1st floor!



Meet the Team

Fiona Bryan
Business Centre Manager

Sian Warner
Marketing Assistant / Customer Service Representative

Kathrine-Anne Douglas
Meeting Room Coordinator / Customer Service Representative

Lucy Kent
Customer Service Representative

David Taylor
Estates Manager

Bob Sampson
Head of IT

Have you seen our new gate?!

With being on a public high street we want to make sure we have the highest security possible and the best safety measures in place for all our clients and the centre.

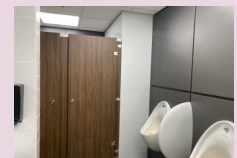
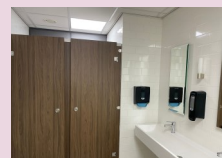
Creating this new pathway to the main reception will stop the public loitering, creating a better access system for all.

Thank you to Holman Fabrications for making this possible!



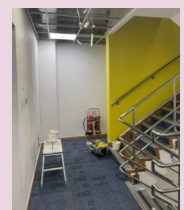
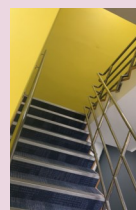
LEVEL 4 Bathrooms open

We are excited to announce that the level 4 bathrooms have been completed and are now ready to open!



The next stage of the project will involve refurbishing the Lift Lobbies!

Please note this work will consist of lots of painting in each area. During this time we ask that you and your visitors take care and are extra vigilant while in these areas. Additionally as the painters focus on the stairs, we encourage the use of the lift to avoid these areas.



Thank you for your patience and co-operation






REGAL COURT BUSINESS CENTRE

LEVEL 1 REDEVELOPMENT IS UNDERWAY!

Winter Weather

With the weather getting colder, there will be a chance of snow and ice. It is important all persons adhere to common sense protocols and accept they have a responsibility for personal safety by following simple rules:

- Snow and ice present health and safety risks, as the potential for slips, trips and falls increases significantly. 
- Walk, don't run. 
- Wear appropriate footwear with a non-slip sole.
- Try where possible to keep your hands free of objects in order to aid balance and minimise the effects of a slip, trip or fall.
- Allow more time for your journey. 
- Be mindful of slipping while walking, particularly when using ramps and steps.
- If driving be mindful of skidding when leaving car parks as they may not have been gritted.



Why not head to level 3 for a game of Ping Pong!

With bat and ball ready on the table you can challenge your co-workers to a game when your ready!

FOLLOW US!



@regal_court



Regal Court Business Centre



@regalcourtbusinesscentre



@regalcourtbusinesscentre

Reception

If you are entering or exiting the building out of reception hours please do not let in anyone you don't know into the building.

Additionally please do not accept any post or parcels on behalf of the building as they may not actually be a client to the centre.



These policies are in place for the safety of all our clients and the centre.

Out of hours line: 01753 910 909

If you have any questions or queries please let us know.

SECURITY NOTICE

Car Park

When entering and exiting the car park, please ensure the car park shutter closes. This shutter should never be propped open.

If this shutter is not closing please contact the team on the out of hours number to report the problem.

